

Comparatiu ocupació hotelera Lloret de Mar 2026-2025

Viatgers (totals)														
	1	2	3	4	5	6	7	8	9	10	11	12	TOTAL	acum 26-25
2026	..	22.254	48.634										70.888	70.888
2025	..	23.610	45.029	121.865	142.533	169.725	179.973	193.729	154.282	107.224	20.700	11.913	1.170.583	68.639
	..	-1.356	3.605										-1.099.695	2.249 3,28%

Pernoctacions (totals)														
	1	2	3	4	5	6	7	8	9	10	11	12	TOTAL	acum 26-25
2026	..	95.788	163.159										258.947	258.947
2025	..	70.255	155.300	479.486	554.551	686.029	894.200	960.229	717.138	476.865	56.506	35.002	5.085.561	225.555
	..	25.533	7.859										-4.826.614	33.392 14,80%

Viatgers														
	1	2	3	4	5	6	7	8	9	10	11	12	TOTAL	acum 26-25
Espanya 26	..	9.143	16.313										25.456	25.456
Espanya 25	..	7.557	19.652	35.026	36.353	44.349	28.626	39.991	29.908	21.729	9.121	6.332	278.644	27.209
	..	1.586	-3.339										-253.188	-1.753 -6,44%

Estranger 26	..	13.111	32.321										45.432	45.432
Estranger 25	..	16.053	25.377	86.839	106.180	125.376	151.347	153.738	124.374	85.495	11.579	5.581	891.939	41.430
	..	-2.942	6.944										-846.507	4.002 9,66%

Pernoctacions														
	1	2	3	4	5	6	7	8	9	10	11	12	TOTAL	acum 26-25
Espanya 26	..	31.352	56.473										87.825	87.825
Espanya 25	..	23.341	55.013	118.950	117.462	110.368	85.592	134.270	82.844	57.790	17.958	16.569	820.157	78.354
	..	8.011	1.460										-732.332	9.471 12,09%

Estranger 26	..	64.436	106.686										171.122	171.122
Estranger 25	..	46.914	100.287	360.536	437.089	575.661	808.608	825.959	634.294	419.075	38.548	18.433	4.265.404	147.201
	..	17.522	6.399										-4.094.282	23.921 16,25%

Estada mitjana (dies)

	1	2	3	4	5	6	7	8	9	10	11	12
2026	..	4,3	3,4									
2025	..	3,0	3,5	3,9	3,9	4,0	5,0	5,0	4,7	4,5	2,7	2,9
	..	1,3	-0,1									

Grau d'ocupació per places (%)

	1	2	3	4	5	6	7	8	9	10	11	12
2026	..	63,52	45,43									
2025	..	59,04	52,13	65,96	64,77	72,81	86,06	89,91	78,28	63,65	38,80	42,70
	..	4,48	-6,70									

Nombre d'establiments oberts estimats

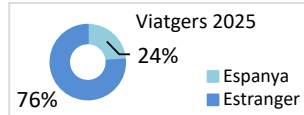
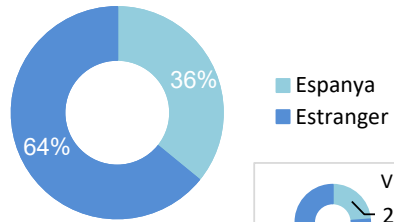
	1	2	3	4	5	6	7	8	9	10	11	12
2026	..	13	30									
2025	..	13	26	59	77	92	99	99	88	67	18	11
	..	0	4									

Nombre de places estimades

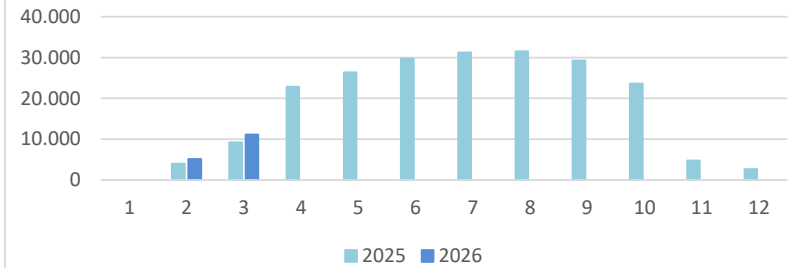
	1	2	3	4	5	6	7	8	9	10	11	12
2026	..	5.117	11.156									
2025	..	4.035	9.221	22.889	26.414	29.764	31.253	31.548	29.283	23.612	4.800	2.637
	..	1.082	1.935									

Notes: 1.- Font: INE. Instituto Nacional de Estadística. EOH. Encuesta Ocupación Hotelera. 2.- (..) Dada no significativa.

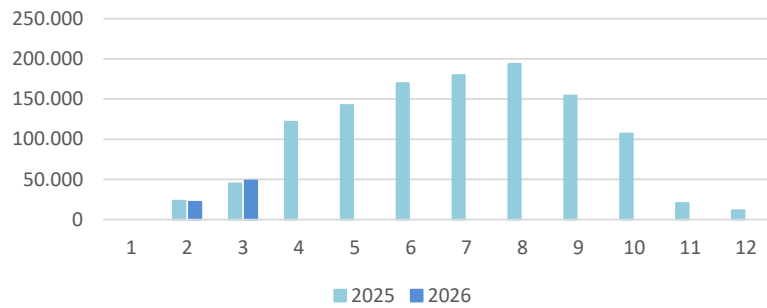
Viatgers 2026



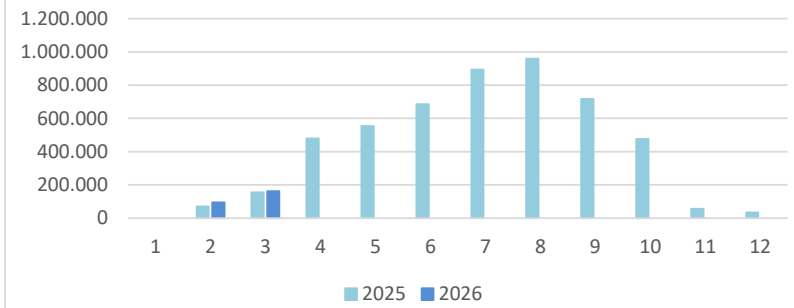
Places estimades



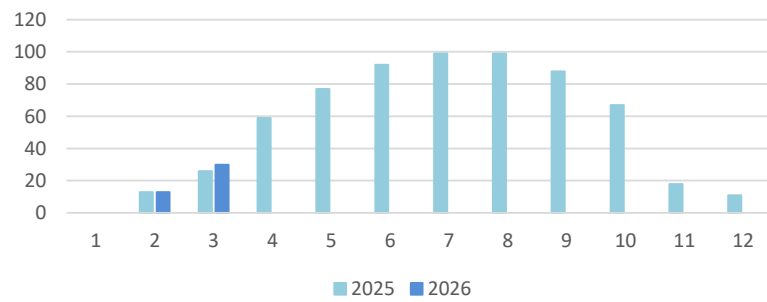
Viatgers



Pernoctacions



Establiments oberts



Grau d'ocupacio per places %

